

Document Reference	Appendix No.	Title
4.01.9c	9.3	
		Archaeological Evaluation Trenching Part 2

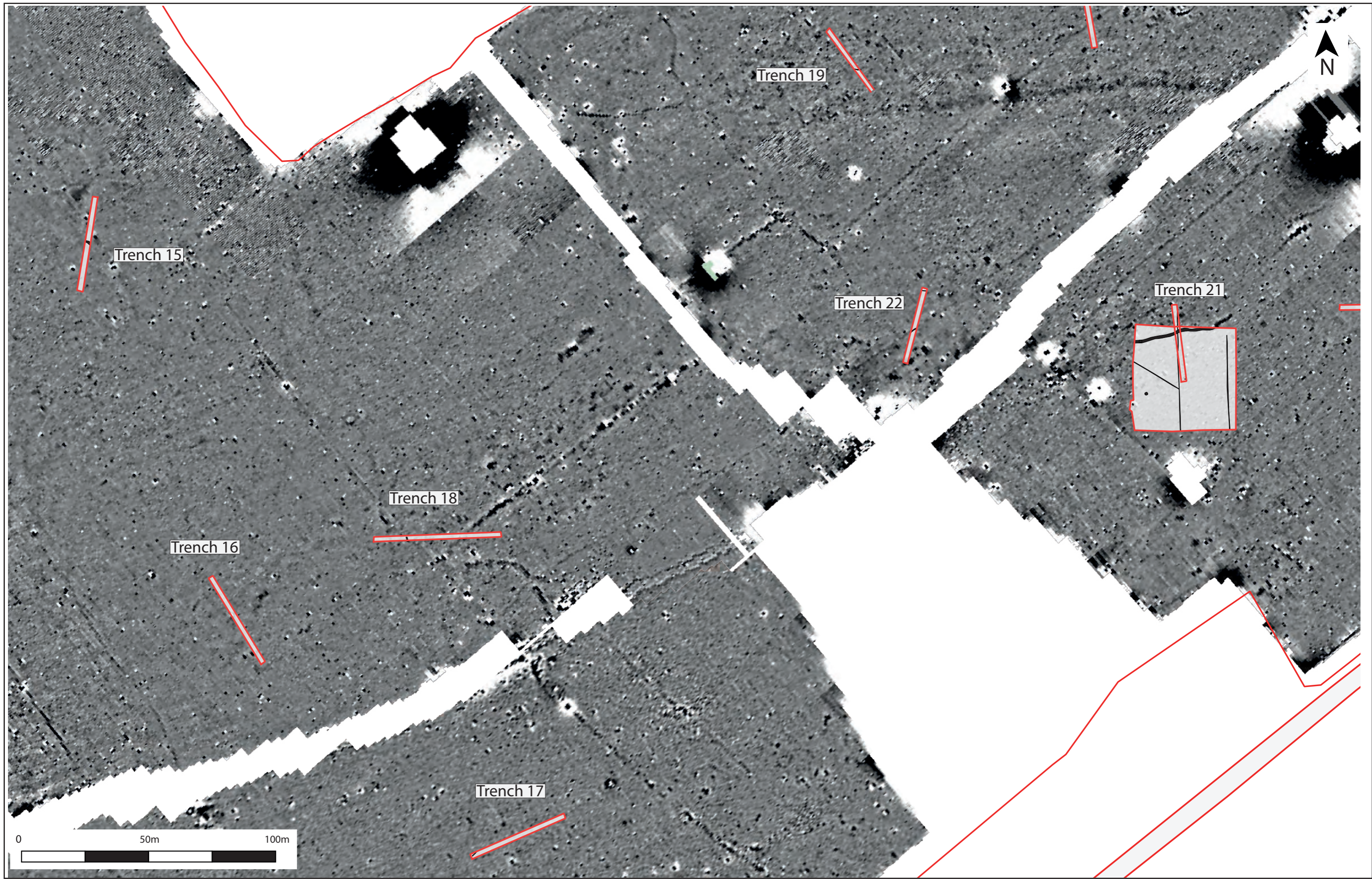


Figure 9. Trenches 15-19, 21 and 52

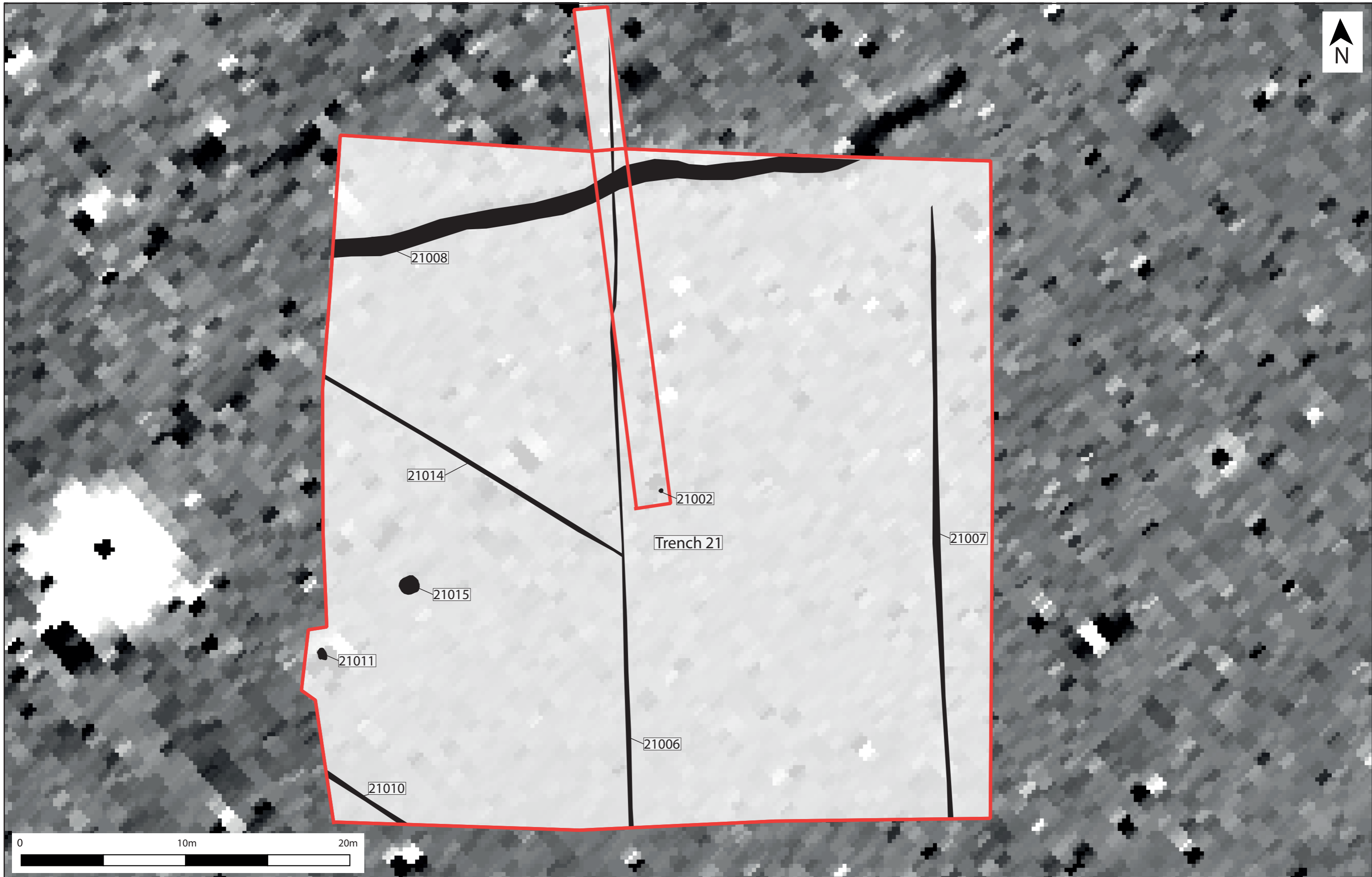


Figure 10. Detail of Trench 21 and its extension

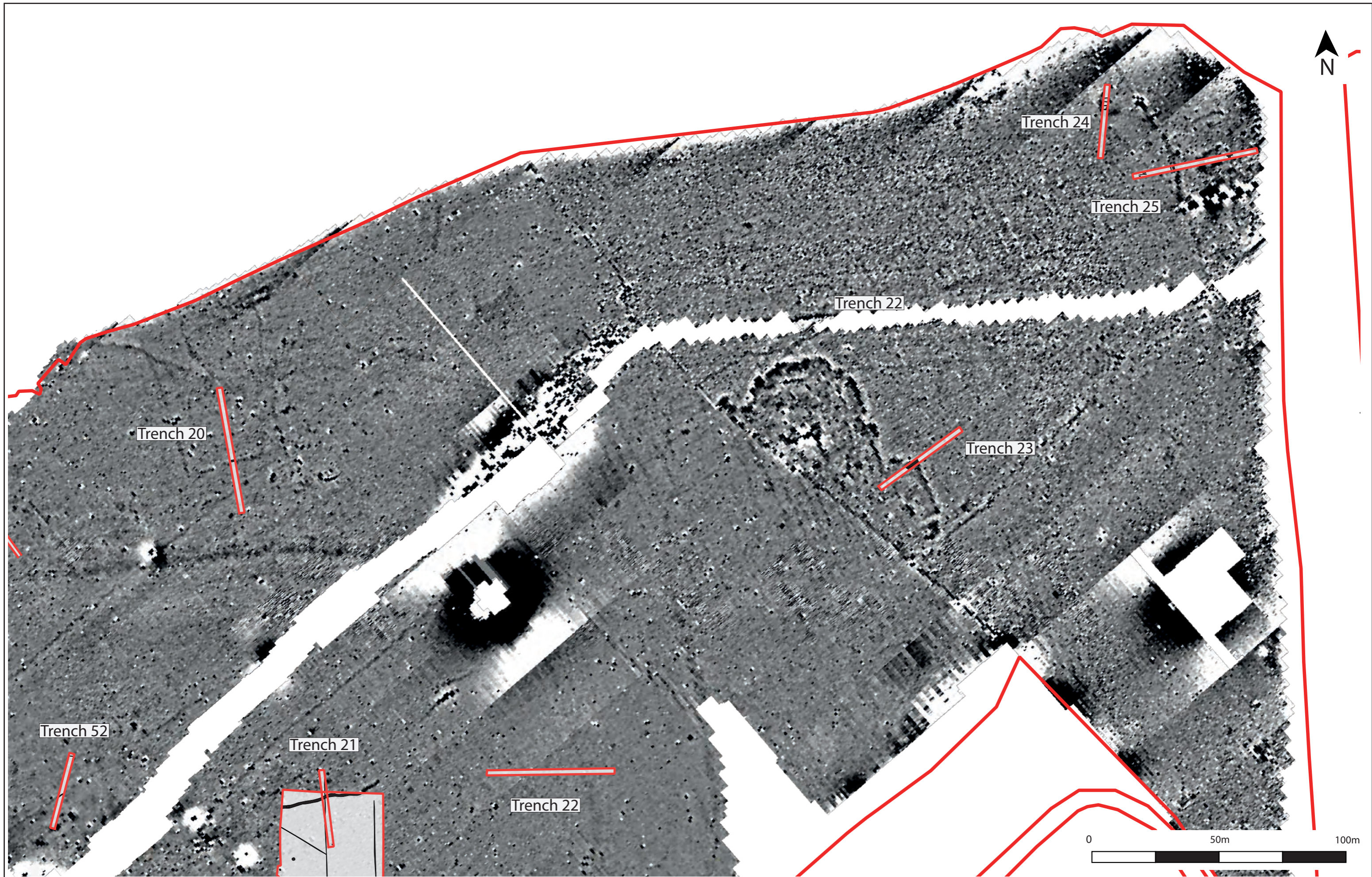


Figure 11. Trenches 20 and 22-25

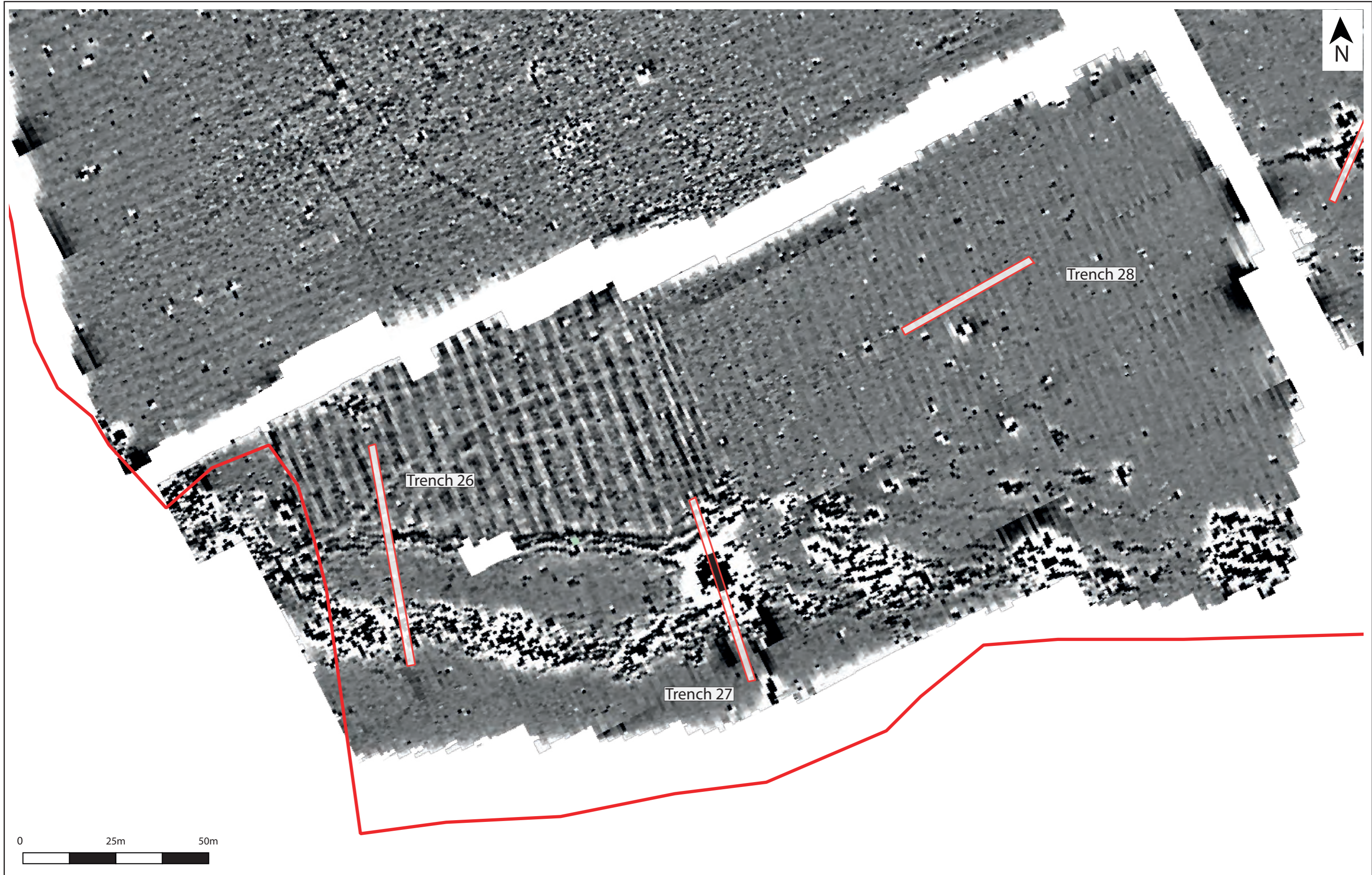


Figure 13. Trenches 26-28

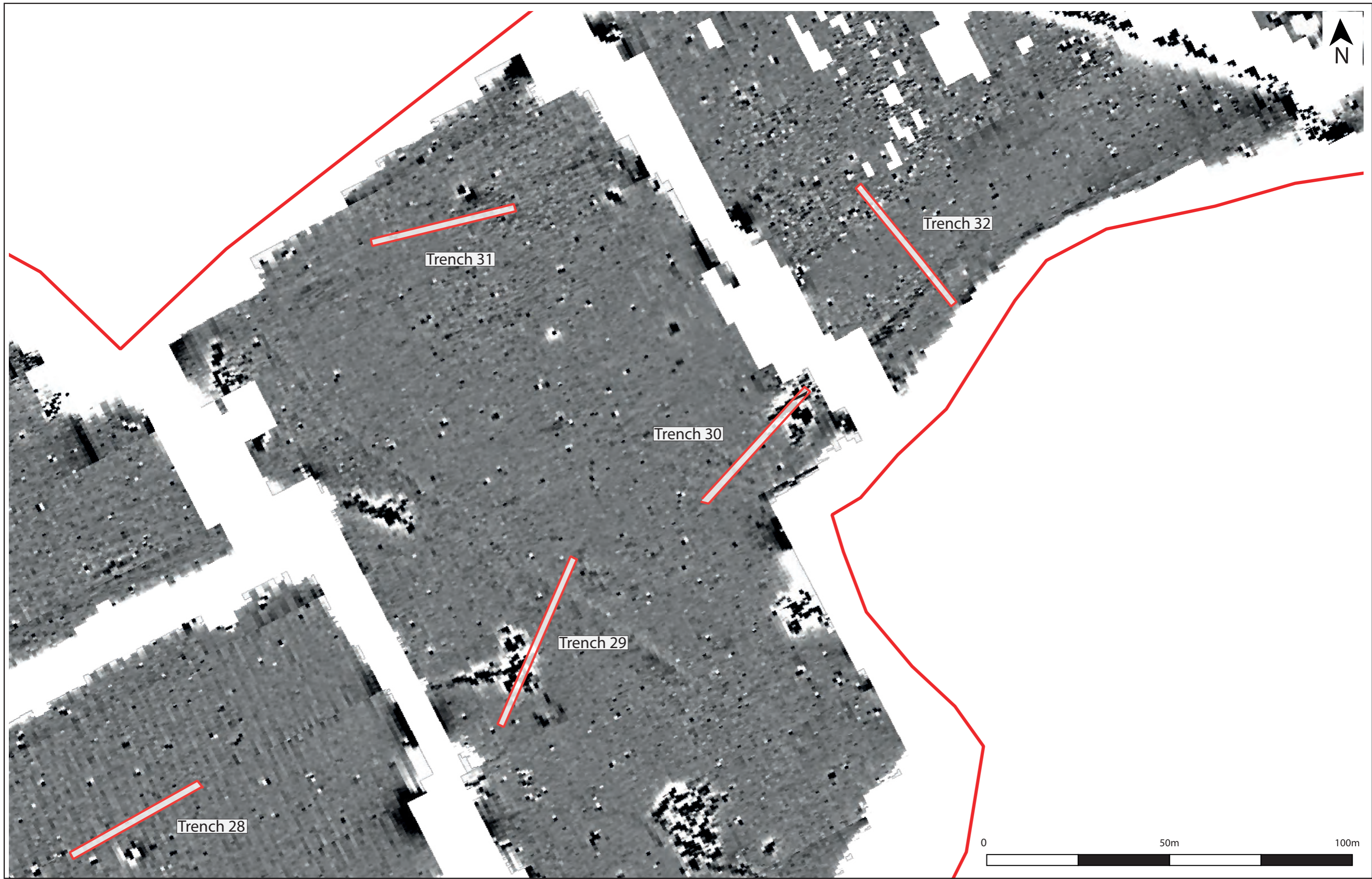


Figure 14. Trenches 29-32

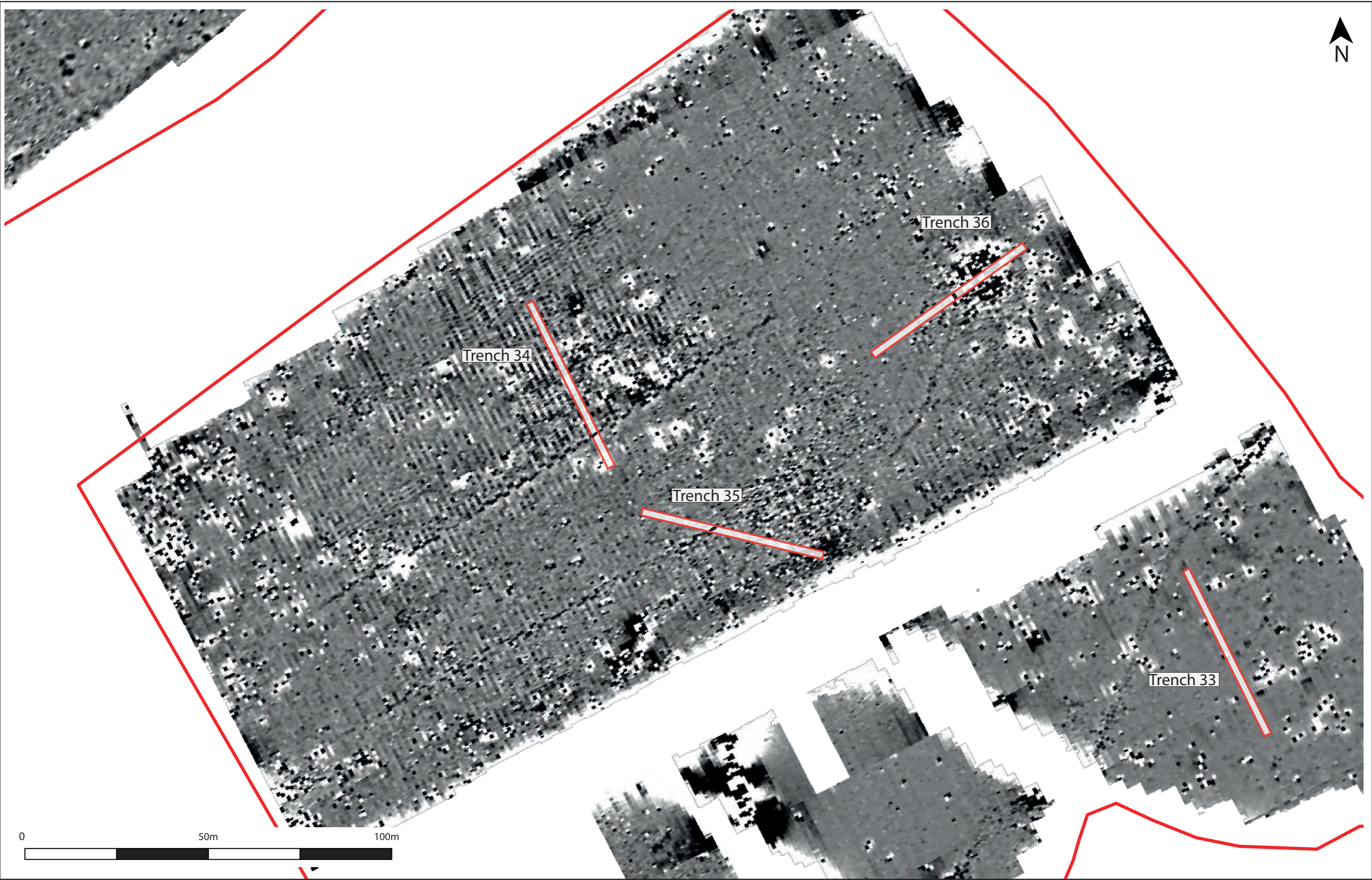


Figure 15. Trenches 33-36

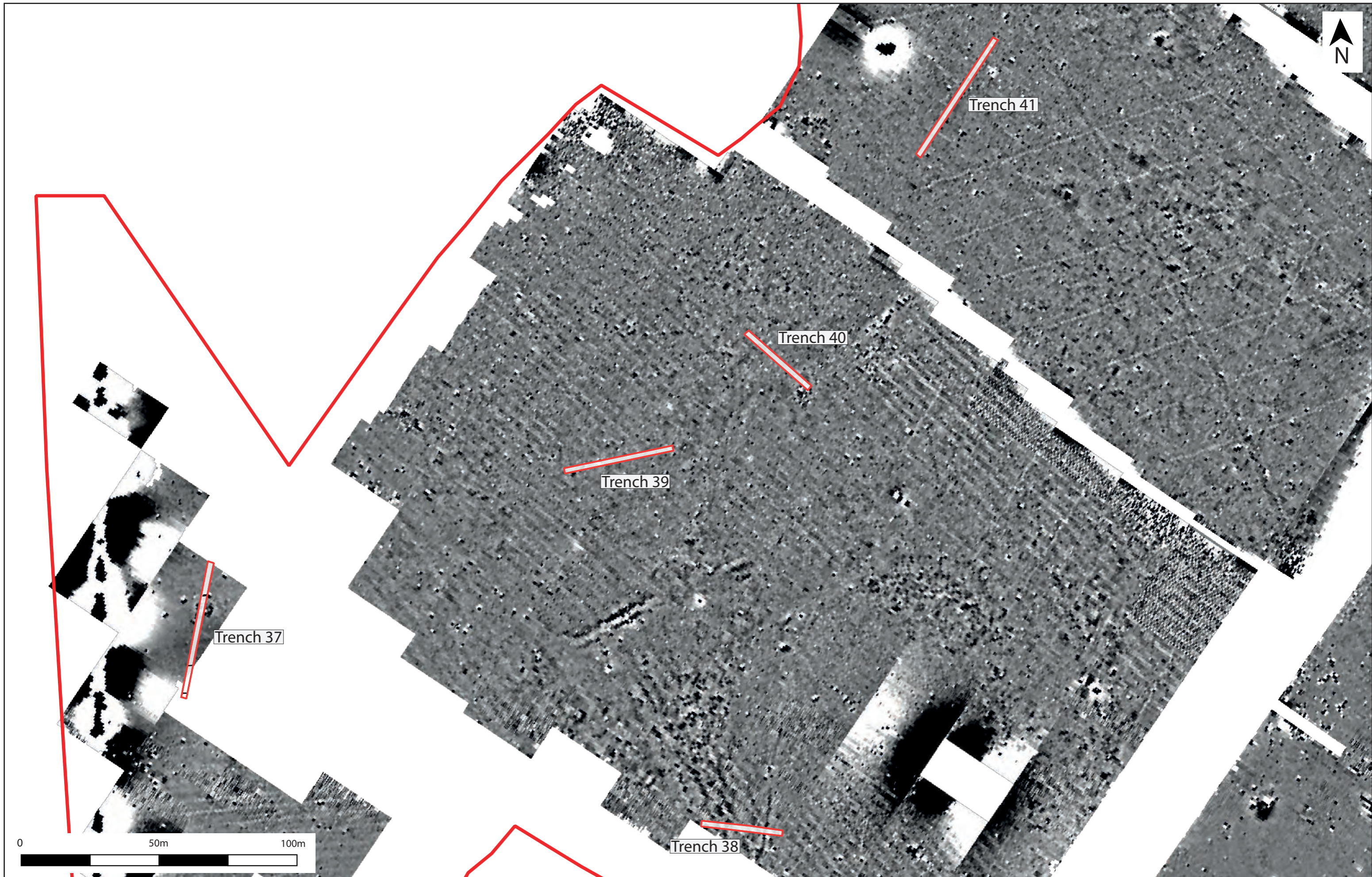


Figure 16. Trenches 37-41

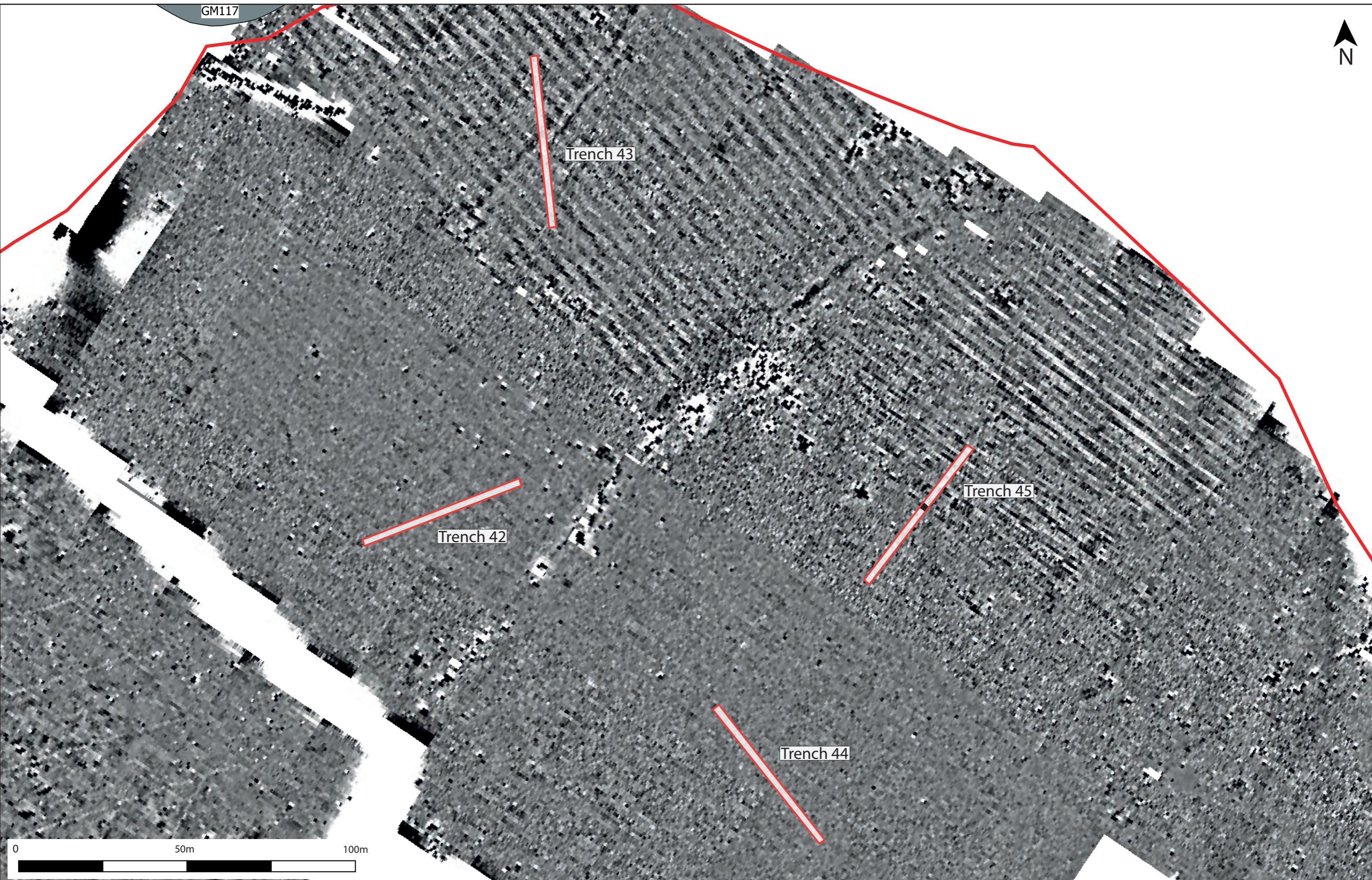


Figure 18. Trenches 42-45

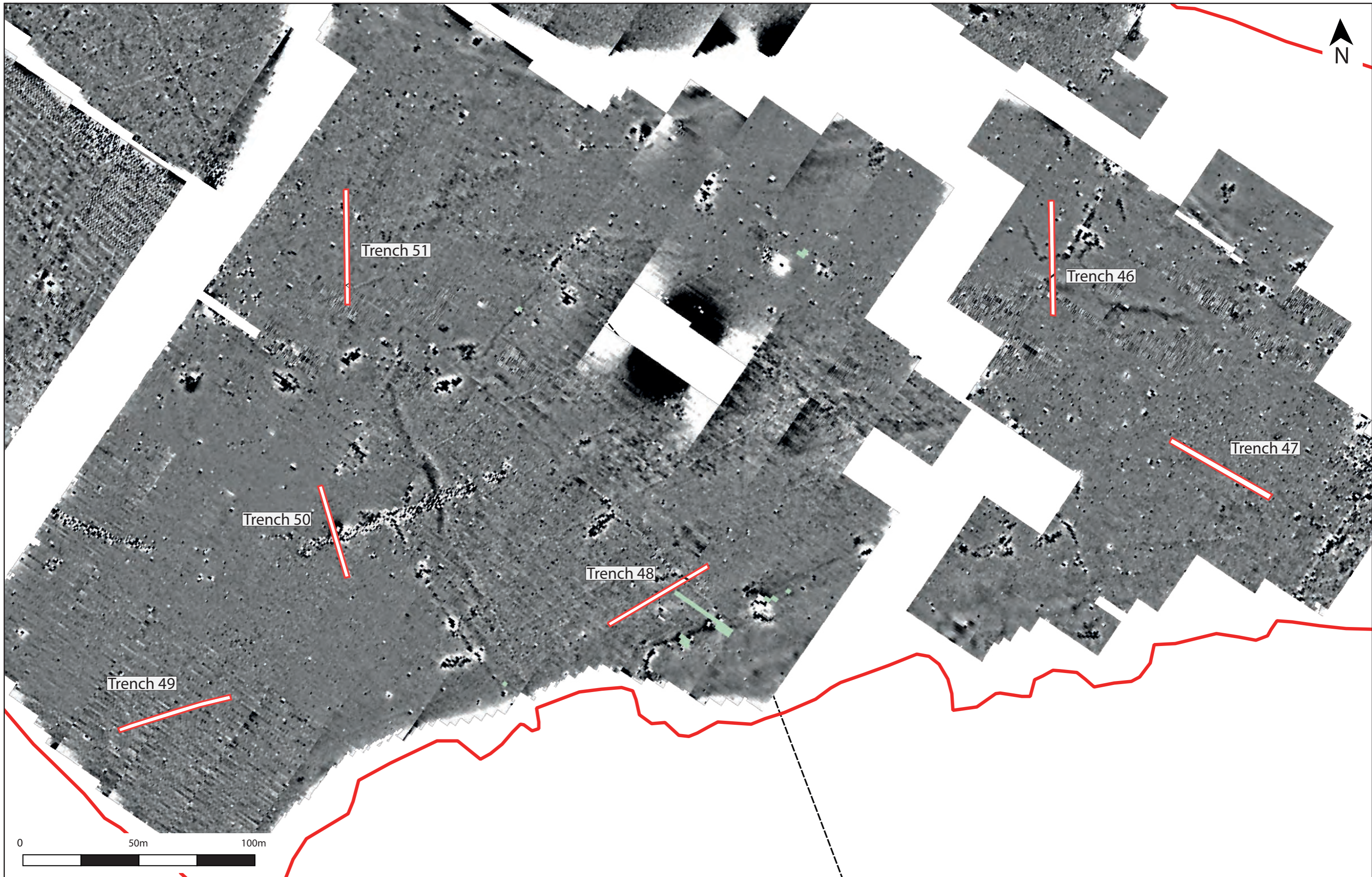


Figure 19. Trenches 46-51

Plates



Plate 1. W-facing shot of Trench 1



Plate 2. S-facing section of [1003] and [1007]



Plate 3. W-facing shot of Trench 2



Plate 4. SE-facing section of [2003]



Plate 5. NW-facing representative section of Trench 2 and ditch [2005]



Plate 6. S-facing shot of Trench 3



Plate 7. SW-facing shot of Trench 4



Plate 8. Plan shot of [4002]



Plate 9. NE-facing shot of Trench 7



Plate 10. NW-facing shot of Trench 5



Plate 11. S-facing shot of Trench 8



Plate 12. W-facing shot of Trench 10



Plate 13. Plan shot of linear [10003]



Plate 14. N-facing shot of Trench 11



Plate 15. W-facing section of linear [11003]



Plate 16. W-facing section of linear [11005]



Plate 17. E-facing representative section of Trench 11 and linear [11009]



Plate 18. E-facing representative section of Trench 11 and linear [11012]



Plate 19. E-facing shot of Trench 12



Plate 20. E-facing section of [12003]