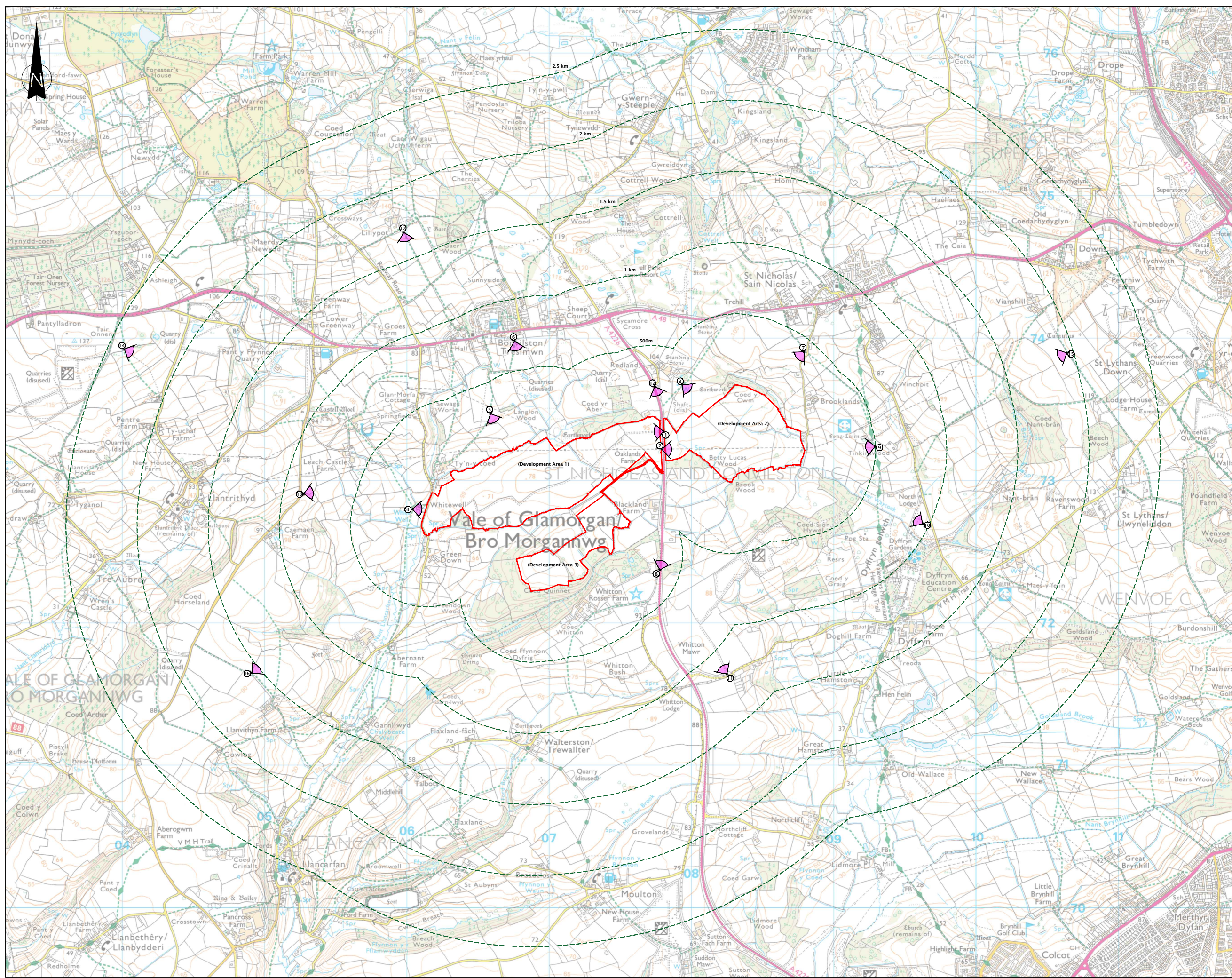


Document Reference	Appendix No.	Title
4.01.7c	7.3	
Figure 7.16 – Viewpoint Location Plan		
Figure 7.17 – Cumulative Solar Sites		



THIS INFORMATION IS CONFIDENTIAL AND THE PROPERTY OF SIRIUS. IT IS RELEASED ON CONDITION THAT NONE OF THE INFORMATION SHALL BE DISCLOSED TO ANY THIRD PARTY OR REPRODUCED IN WHOLE OR PART WITHOUT THE PRIOR CONSENT IN WRITING OF SIRIUS.


NOTES

KEY

- SITE BOUNDARY (MAX DEPLOYMENT AREA)
- ▲ VIEWPOINT LOCATION

REV	DESCRIPTION	DATE	BY

CLIENT




4245 Park Approach, Thorpe Park, Leeds, LS15 8GB, 0113 264 9960

JOB TITLE

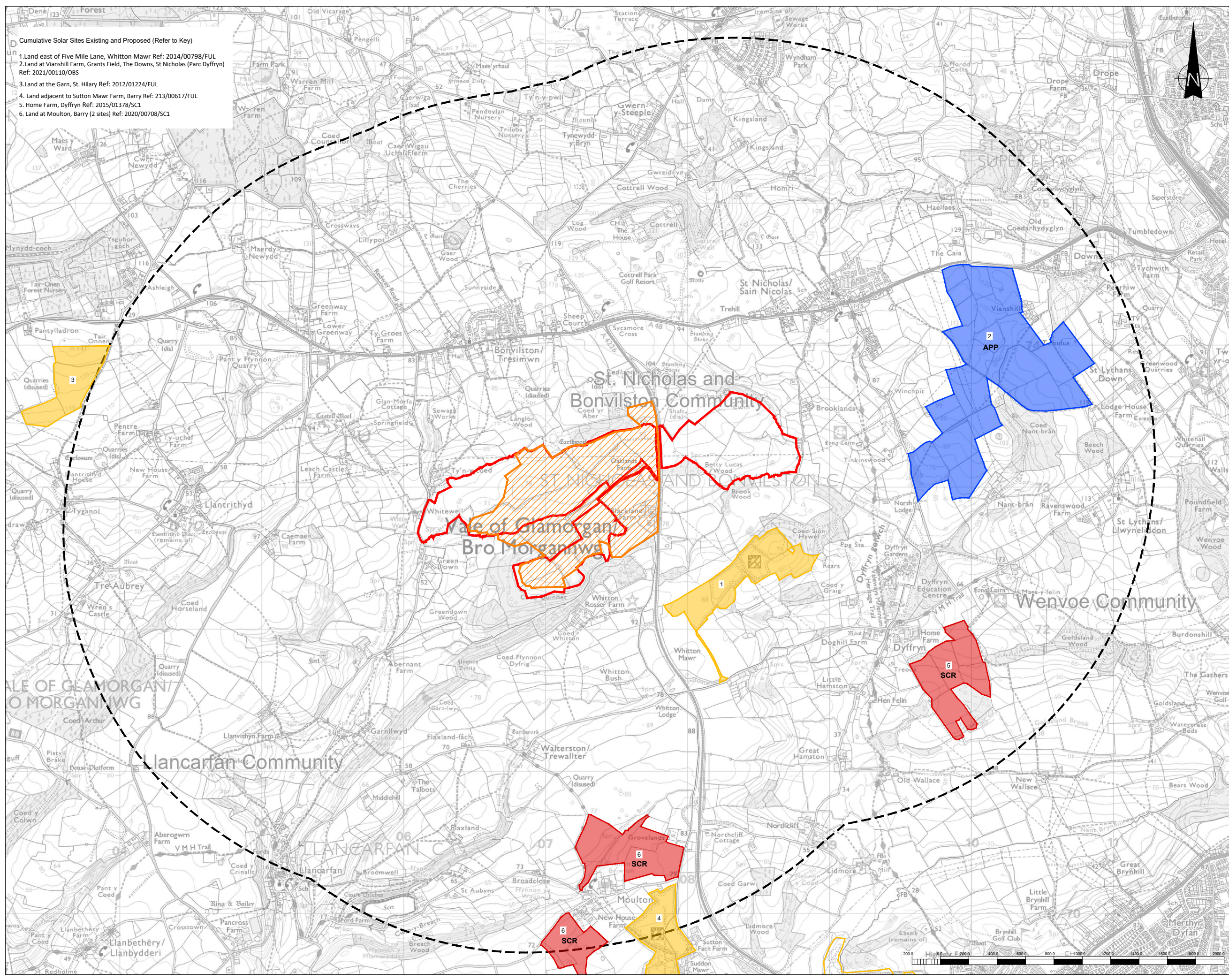
OAKLANDS SOLAR FARM

DRAWING TITLE

FIGURE 7.16 VIEWPOINT LOCATION PLAN

DRAWN	DATE	APPROVED	DATE
AS	23/8/2022	JC	23/8/2022

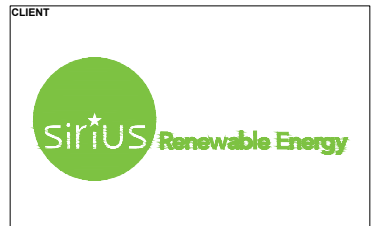
SCALE	SHEET	DRAWING NUMBER	REVISION
1:25000		SRE1113 09 16 R0	0



- Cumulative Solar Sites Existing and Proposed (Refer to Key)
1. Land east of Five Mile Lane, Whitton Mawr Ref: 2014/00798/FUL
 2. Land at Vianshill Farm, Grants Field, The Downs, St Nicholas (Parc Dyffryn) Ref: 2021/00110/OBS
 3. Land at the Garn, St. Hilary Ref: 2012/01224/FUL
 4. Land adjacent to Sutton Mawr Farm, Barry Ref: 213/00617/FUL
 5. Home Farm, Dyffryn Ref: 2015/01378/SC1
 6. Land at Moulton, Barry (2 sites) Ref: 2020/00708/SC1

THIS INFORMATION IS CONFIDENTIAL AND THE PROPERTY OF SIRIUS. IT IS RELEASED ON CONDITION THAT NONE OF THE INFORMATION SHALL BE DISCLOSED TO ANY THIRD PARTY OR REPRODUCED IN WHOLE OR PART WITHOUT THE PRIOR CONSENT IN WRITING OF SIRIUS.

- KEY**
- SITE BOUNDARY
 - STUDY AREA (2.5km)
 - POTENTIAL SOLAR ENERGY AREA (VoG Policy MG30)
 - OP SOLAR SITES OPERATIONAL
 - APP SOLAR SITES PROPOSED STATUS: APPLICATION
 - CON SOLAR SITES PROPOSED STATUS: CONSENTED
 - SCR SOLAR SITES PROPOSED STATUS: SCREENING



JOB TITLE

OAKLANDS SOLAR FARM

DRAWING TITLE

FIGURE 7.17 CUMULATIVE SOLAR SCHEMES

DRAWN	DATE	APPROVED	DATE
S.T/RB	24/8/2022	A.S	24/8/2022
SCALE	SHEET	DRAWING NUMBER	REVISION
1:25000	mes	SRE1113 09 17	7