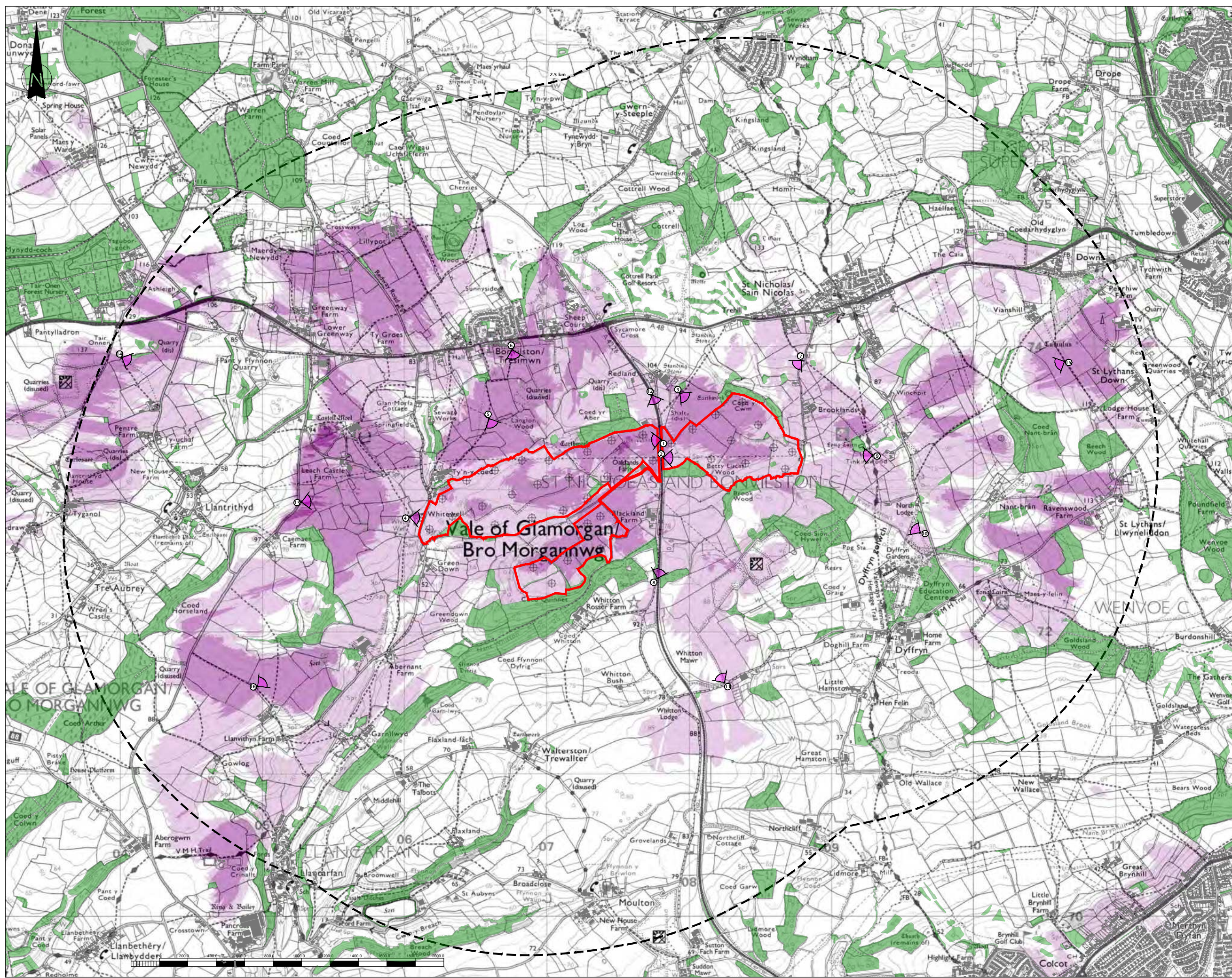


Document Reference	Appendix No.	Title
4.01.7c	7.3	
Figure 7.14 - Zone of Theoretical Visibility (ZTV) (2.5km) Barriers		
Figure 7.15 – VISUAL RECEPTORS		



THIS INFORMATION IS CONFIDENTIAL AND THE PROPERTY OF SIRIUS. IT IS RELEASED ON CONDITION THAT NONE OF THE INFORMATION SHALL BE DISCLOSED TO ANY THIRD PARTY OR REPRODUCED IN WHOLE OR PART WITHOUT THE PRIOR CONSENT IN WRITING OF SIRIUS.

**NOTES**

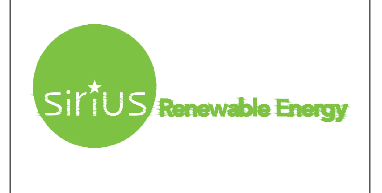
1. THIS DRAWING IS BASED UPON A COMPUTER GENERATED ZONE OF THEORETICAL VISIBILITY (ZTV) WHICH ILLUSTRATES AREAS FROM WHERE IT MAY BE THEORETICALLY POSSIBLE TO VIEW ALL OR PART OF THE PROPOSED DEVELOPMENT. THE ZTV IS GENERATED USING REPRESENTATIVE HEIGHT POINTS (3m agh) SPACED WITHIN THE SITE. THE (SCREENING) ZTV INCORPORATES THE SCREENING EFFECTS OF BUILDINGS (C.8m HIGH BARRIER) AND WOODLAND COVER (C.12m HIGH BARRIER) AS MAPPED ON ORDNANCE SURVEY VECTOR MAP DISTRICT DATA, BUT OMITTS SMALLER VEGETATION (EG HEDGEROWS) AND LOCALISED LANDFORM VARIATIONS. AS A RESULT THERE MAY BE RECEPTORS WITHIN THE STUDY AREA WHICH ALTHOUGH SHOWN AS FALLING WITHIN THE ZTV, ARE SCREENED OR FILTERED WHICH PRECLUDES VIEWING OPPORTUNITIES.
2. THE ZTVS ARE CALCULATED USING WINDFARM RESOFT SOFTWARE THROUGH THE COMBINATION OF A DIGITAL TERRAIN MODEL (DTM) OF THE LANDSCAPE, DERIVED FROM THE ORDNANCE SURVEY 'TERRAIN 5' 5m RESOLUTION DTM DATA COMBINED WITH THE REPRESENTATIVE ILLUSTRATIVE HEIGHT POINTS FOR THE SOLAR ARRAYS. IN CALCULATING INTER VISIBILITY, THE SOFTWARE INCORPORATES EARTH CURVATURE AND THE EFFECTS OF REFRACTION THROUGH THE ATMOSPHERE. THE RESULTING ZTV IS OVERLAID ON OS MAPPING AT AN APPROPRIATE SCALE. 1.6M VIEWING HEIGHT.

**KEY**

- SITE BOUNDARY
- STUDY AREA (2.5km)
- 1 - 25% OF SOLAR ARRAYS THEORETICALLY VISIBLE
- 26 - 50% OF SOLAR ARRAYS THEORETICALLY VISIBLE
- 51% - 75% OF ARRAY THEORETICALLY VISIBLE
- 76% - 100% OF ARRAYS THEORETICALLY VISIBLE
- ZTV HEIGHT SURVEY REFERENCE POINT
- PROPOSED VIEWPOINT
- WOODLAND
- BUILDINGS

REV	DESCRIPTION	DATE	BY

**CLIENT**



**JOB TITLE**

OAKLANDS FARM SOLAR

**DRAWING TITLE**

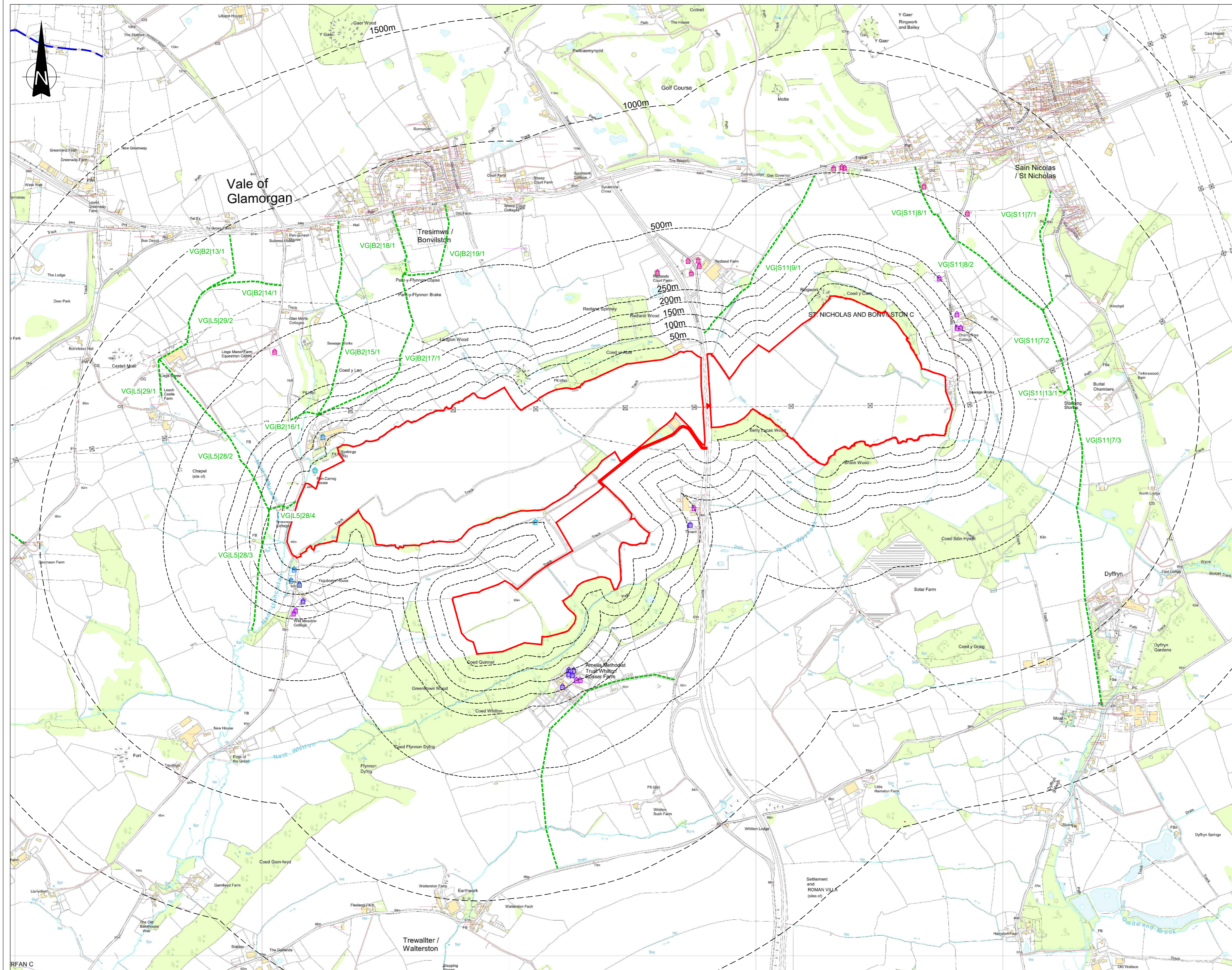
FIGURE 7.14 - ZONE OF THEORETICAL VISIBILITY - VISUAL BARRIERS

DRAWN	DATE	APPROVED	DATE
A.S	22/8/2022	J.C	22/8/2022

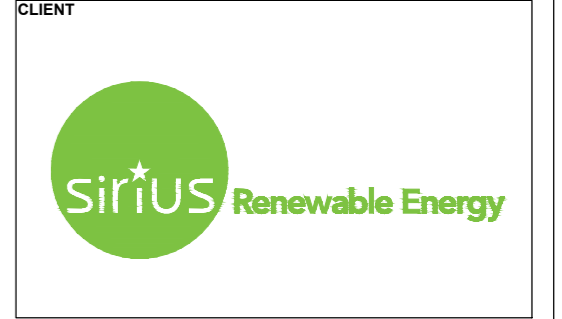
SCALE	SHEET	DRAWING NUMBER	REVISION
1:25000	A3L	SRE113/09/14	0

THIS INFORMATION IS CONFIDENTIAL AND THE PROPERTY OF SIRIUS. IT IS RELEASED ON CONDITION THAT NONE OF THE INFORMATION SHALL BE DISCLOSED TO ANY THIRD PARTY OR REPRODUCED IN WHOLE OR PART WITHOUT THE PRIOR CONSENT IN WRITING OF SIRIUS.

KEY	
	<b>SITE BOUNDARY</b> 1,271,807m <sup>2</sup> 127.18 Hectares 314.3 Acres
	OFFSETS FROM SITE BOUNDARY
	0m-50m FROM SITE BOUNDARY
	50m-100m FROM SITE BOUNDARY
	100m-150m FROM SITE BOUNDARY
	150m-200m FROM SITE BOUNDARY
	200m-250m FROM SITE BOUNDARY
	250m-500m FROM SITE BOUNDARY
	PUBLIC FOOTPATH (with Parish Ref No.)



REV	DESCRIPTION	DATE	BY



Russel House, Mill Road, Langley Moor, Durham, DH7 8JL 0191 378 9972

**JOB TITLE**  
OAKLANDS SOLAR FARM

DRAWING TITLE	
Figure 7.15 - Visual Receptors	

DRAWN	DATE	APPROVED	DATE
S.T	23/8/2022	A.S	23/8/2022

SCALE	SHEET	DRAWING NUMBER	REVISION
1:10000	A2L	SRE1113/09/15	0