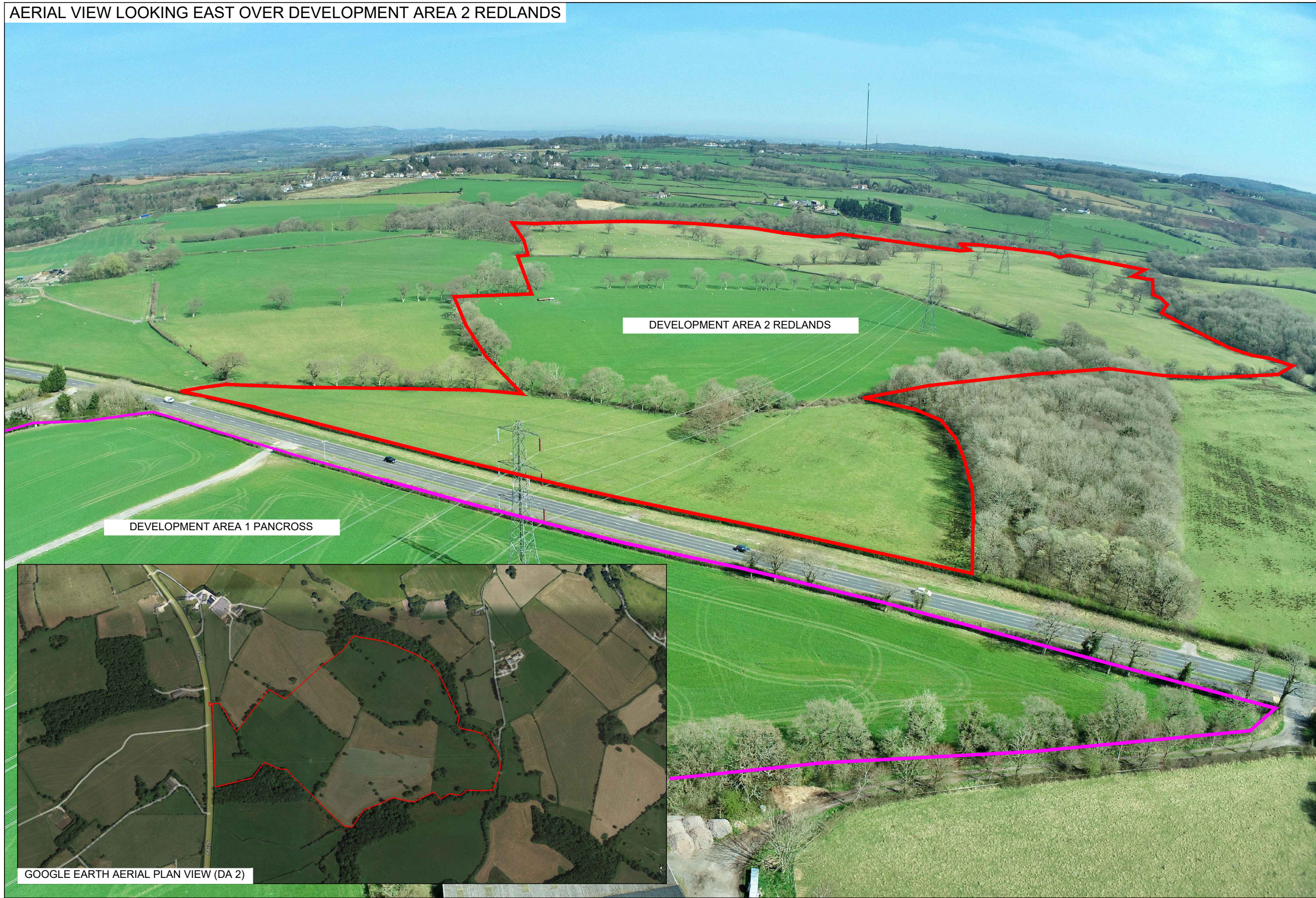


Document Reference	Appendix No.	Title
4.01.7c	7.3	
		Figure 7.11 – Landscape Context – Development Area 2
		Figure 7.12 – Landscape Context – Development Area 3
		Figure 7.13 – Zone of Theoretical Visibility (ZTV) (2.5km) No Visual Barriers

AERIAL VIEW LOOKING EAST OVER DEVELOPMENT AREA 2 REDLANDS



THIS INFORMATION IS CONFIDENTIAL AND THE PROPERTY OF SIRIUS. IT IS RELEASED ON CONDITION THAT NONE OF THE INFORMATION SHALL BE DISCLOSED TO ANY THIRD PARTY OR REPRODUCED IN WHOLE OR PART WITHOUT THE PRIOR CONSENT IN WRITING OF SIRIUS.

NOTES

KEY

— SITE BOUNDARY

REV	DESCRIPTION	DATE	BY

CLIENT



JOB TITLE

OAKLANDS SOLAR FARM

DRAWING TITLE

FIGURE 7.11 LANDSCAPE CONTEXT- DEVELOPMENT AREA 2

DRAWN	DATE	APPROVED	DATE
R.B.	5/9/2022	J.C	5/9/2022

SCALE	SHEET	DRAWING NUMBER	REVISION
NTS	a 2	SRE1113 09/11	0

AERIAL VIEW LOOKING WEST OVER DEVELOPMENT AREA 3 OAKLANDS



THIS INFORMATION IS CONFIDENTIAL AND THE PROPERTY OF SIRIUS. IT IS RELEASED ON CONDITION THAT NONE OF THE INFORMATION SHALL BE DISCLOSED TO ANY THIRD PARTY OR REPRODUCED IN WHOLE OR PART WITHOUT THE PRIOR CONSENT IN WRITING OF SIRIUS.

NOTES

KEY

— SITE BOUNDARY

REV	DESCRIPTION	DATE	BY

CLIENT



JOB TITLE

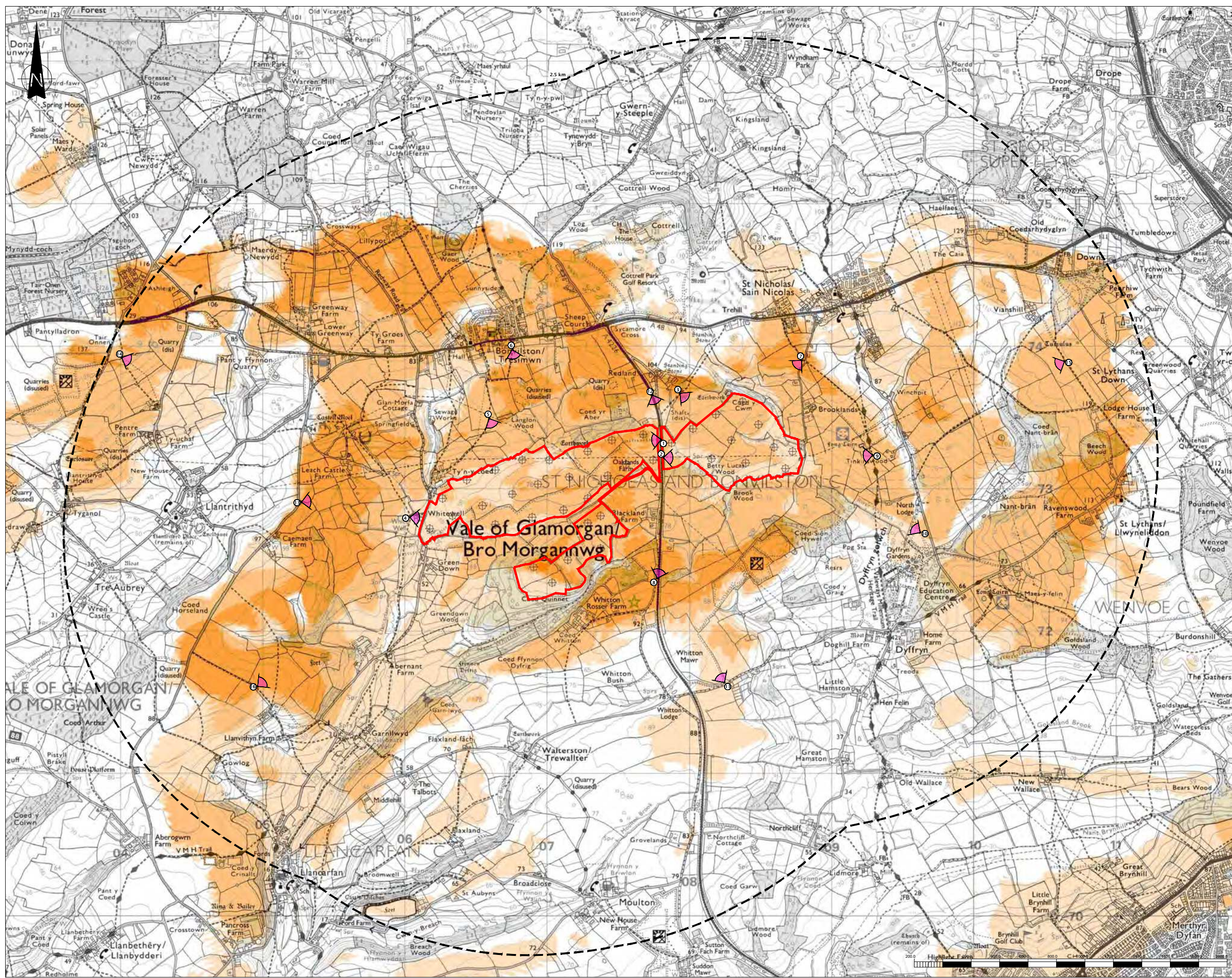
OAKLANDS SOLAR FARM

DRAWING TITLE

FIGURE 7.12 LANDSCAPE CONTEXT- DEVELOPMENT AREA 3

DRAWN	DATE	APPROVED	DATE
R.B.	5/9/2022	J.C	5/9/2022

SCALE	SHEET	DRAWING NUMBER	REVISION
NTS	a 3	SRE1113 09 12 R0	



THIS INFORMATION IS CONFIDENTIAL AND THE PROPERTY OF SIRIUS. IT IS RELEASED ON CONDITION THAT NONE OF THE INFORMATION SHALL BE DISCLOSED TO ANY THIRD PARTY OR REPRODUCED IN WHOLE OR PART WITHOUT THE PRIOR CONSENT IN WRITING OF SIRIUS.

**NOTES**

1. THIS DRAWING IS BASED UPON A COMPUTER GENERATED ZONE OF THEORETICAL VISIBILITY (ZTV) WHICH ILLUSTRATES AREAS FROM WHERE IT MAY BE THEORETICALLY POSSIBLE TO VIEW ALL OR PART OF THE PROPOSED DEVELOPMENT. THE ZTV IS GENERATED USING REPRESENTATIVE HEIGHT POINTS (3m agh) SPACED WITHIN THE SITE. THE (SCREENING) ZTV INCORPORATES THE SCREENING EFFECTS OF BUILDINGS (C.8m HIGH BARRIER) AND WOODLAND COVER (C.12m HIGH BARRIER) AS MAPPED ON ORDNANCE SURVEY VECTOR MAP DISTRICT DATA, BUT OMITTS SMALLER VEGETATION (EG HEDGEROWS) AND LOCALISED LANDFORM VARIATIONS. AS A RESULT THERE MAY BE RECEPTORS WITHIN THE STUDY AREA WHICH ALTHOUGH SHOWN AS FALLING WITHIN THE ZTV, ARE SCREENED OR FILTERED WHICH PRECLUDES VIEWING OPPORTUNITIES.
2. THE ZTVS ARE CALCULATED USING WINDFARM RESOFT SOFTWARE THROUGH THE COMBINATION OF A DIGITAL TERRAIN MODEL (DTM) OF THE LANDSCAPE, DERIVED FROM THE ORDNANCE SURVEY TERRAIN 5' 5m RESOLUTION DTM DATA COMBINED WITH THE REPRESENTATIVE ILLUSTRATIVE HEIGHT POINTS FOR THE SOLAR ARRAYS. IN CALCULATING INTER VISIBILITY, THE SOFTWARE INCORPORATES EARTH CURVATURE AND THE EFFECTS OF REFRACTION THROUGH THE ATMOSPHERE. THE RESULTING ZTV IS OVERLAID ON OS MAPPING AT AN APPROPRIATE SCALE. 1.6M VIEWING HEIGHT.

**KEY**

- SITE BOUNDARY
- STUDY AREA (2.5km)
- 1 - 25% OF SOLAR ARRAYS THEORETICALLY VISIBLE
- 26 - 50% OF SOLAR ARRAYS THEORETICALLY VISIBLE
- 51% - 75% OF ARRAY THEORETICALLY VISIBLE
- 76% - 100% OF ARRAYS THEORETICALLY VISIBLE
- ZTV HEIGHT SURVEY REFERENCE POINT
- PROPOSED VIEWPOINT

REV	DESCRIPTION	DATE	BY

CLIENT

4245 Park Approach, Thorpe Park, Leeds. LS15 8GB. 0113 264 9960

JOB TITLE  
**OAKLANDS SOLAR FARM**

DRAWING TITLE  
**FIGURE 7.13 - ZONE OF THEORETICAL VISIBILITY (ZTV) (2.5km) NO VISUAL BARRIERS**

DRAWN	DATE	APPROVED	DATE
A.S	22/8/2022	J.C	22/8/2022

SCALE	SHEET	DRAWING NUMBER	REVISION
1:25000	A3L	SRE113/09/13	0